

WIWSA Quarterly Member Meeting



Climate Change and Water Systems

- **December 2022 Flooding**
- **Puget Sound Sea Level Rise Vulnerability Assessment**
- **Sumas Flood Response**
- **Town of Coupeville Sea Level Rise Vulnerability Assessment**
- **Sea Water Intrusion in Island County**
- **Vulnerability Self-Assessment Tool**
- **Emergency Management Community Response Team Training**
- **Q&A**

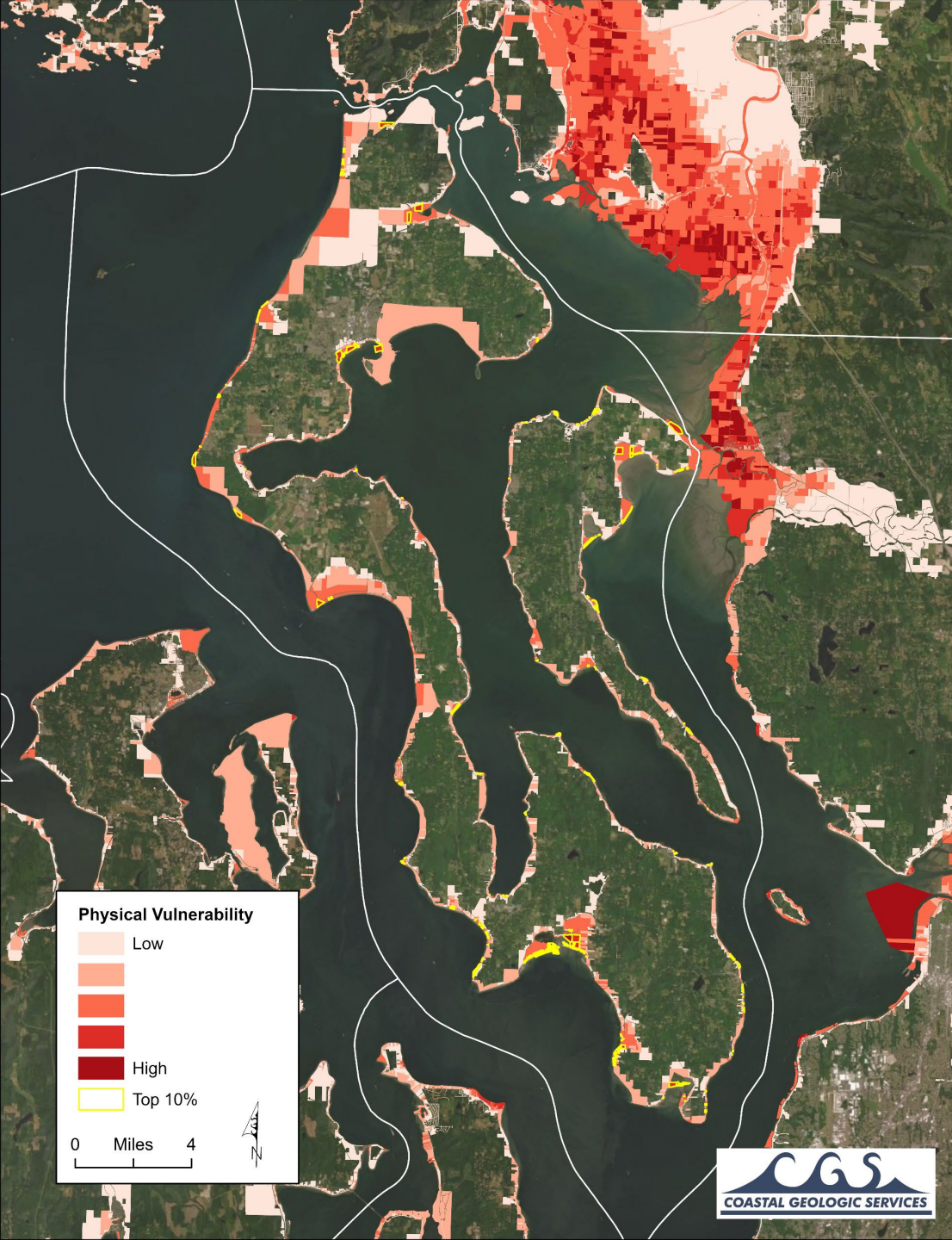
December 2022 Flooding

- Storm surge plus king tide
- 2 ft tidal anomaly

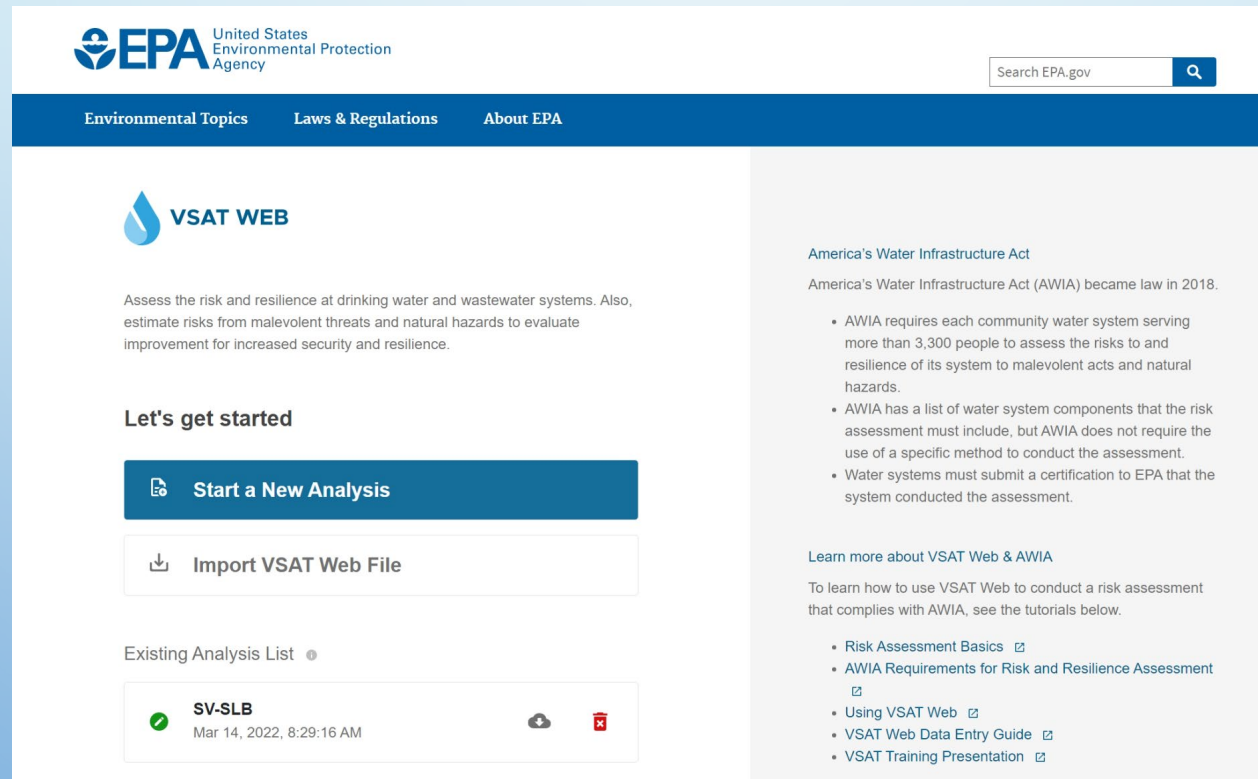


Island County Physical Vulnerability to Sea Level Rise

- Areas in yellow are the top 10% most vulnerable
- Areas in yellow are the areas that flooded
- [Puget Sound Parcel-scale Sea Level Rise Vulnerability Assessment | Washington Coastal Hazards Resilience Network \(wacoastalnetwork.com\)](#)



Vulnerability Self-Assessment Tool (VSAT) (epa.gov)



The screenshot shows the EPA VSAT Web interface. At the top left is the EPA logo with the text "United States Environmental Protection Agency". To the right is a search bar labeled "Search EPA.gov". Below the logo is a navigation bar with "Environmental Topics", "Laws & Regulations", and "About EPA". The main content area is split into two columns. The left column features a "VSAT WEB" header with a water drop icon, a brief description of the tool's purpose, a "Let's get started" section with a prominent "Start a New Analysis" button and an "Import VSAT Web File" button, and an "Existing Analysis List" showing a single entry "SV-SLB" dated "Mar 14, 2022, 8:29:16 AM". The right column contains information about the "America's Water Infrastructure Act", including a list of requirements and links to "Learn more about VSAT Web & AWIA" and various tutorial documents.

EPA United States Environmental Protection Agency

Search EPA.gov

Environmental Topics Laws & Regulations About EPA

VSAT WEB

Assess the risk and resilience at drinking water and wastewater systems. Also, estimate risks from malevolent threats and natural hazards to evaluate improvement for increased security and resilience.

Let's get started

[Start a New Analysis](#)

[Import VSAT Web File](#)

Existing Analysis List

	SV-SLB Mar 14, 2022, 8:29:16 AM		
--	---	--	--

America's Water Infrastructure Act

America's Water Infrastructure Act (AWIA) became law in 2018.

- AWIA requires each community water system serving more than 3,300 people to assess the risks to and resilience of its system to malevolent acts and natural hazards.
- AWIA has a list of water system components that the risk assessment must include, but AWIA does not require the use of a specific method to conduct the assessment.
- Water systems must submit a certification to EPA that the system conducted the assessment.

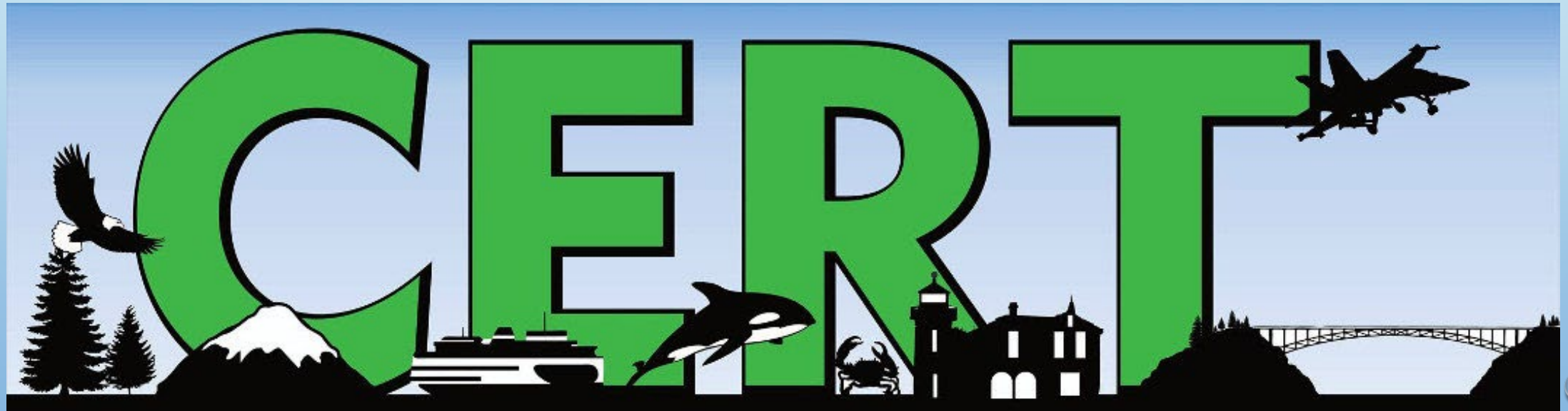
Learn more about VSAT Web & AWIA

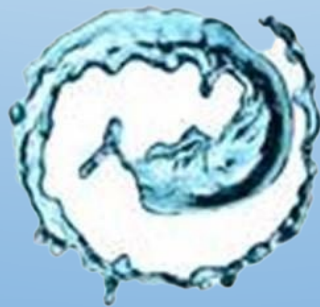
To learn how to use VSAT Web to conduct a risk assessment that complies with AWIA, see the tutorials below.

- [Risk Assessment Basics](#)
- [AWIA Requirements for Risk and Resilience Assessment](#)
- [Using VSAT Web](#)
- [VSAT Web Data Entry Guide](#)
- [VSAT Training Presentation](#)



Emergency Management Community Emergency
Response Team (islandcountywa.gov)





Safe Adequate Water